

**DESCRIPTION:** #4320  
Commercial Timer 24 Hour 7 Day for TC-2 Electronic Thermostat

**APPLICATION**

The GMX Series is a universal electromechanical time switch within NEMA 1 indoor enclosures or NEMA 3R outdoor enclosures intended for the control of lighting, heating, air conditioning, pumps, motors, or general electrical circuits in residential, commercial, industrial, and agricultural facilities.

Model GMX SW SPDT 7 day synchronous drive

**SPECIFICATIONS:**

Switch Rating: SPDT Switch

- 21A Resistive @ 125/250 VAC
- 1 HP @ 125 VAC
- 2 HP @ 240 VAC
- 16 FLA, 96 LRA, 120 VAC
- 12 FLA, 72 LRA, 240 VAC
- 1350W Tungsten @ 240 VAC
- 675W Tungsten @ 120 VAC

**ENVIRONMENTAL RATINGS**

Ambient Temperature: -40F to 180F synchronous drive  
Humidity: 0-95% RH, Non-condensin

**WIRING CONNECTIONS:**

Screw clamp terminals for up to AWG #10 wires.

**INSTALLATION**

1. Select knockouts to be used. Remove the inner (1/2") knockout by inserting a screwdriver in the slot and carefully punch knockout loose. Remove slug. If the 3/4" knock is required, remove the outer ring with pliers after removing the 1/2" knockout. Smooth edges with a knife if necessary
2. Place enclosure in desired mounting location and mark the three mounting ho
3. Drill holes for #10 screws, start screws in holes
4. Place enclosure over screws and tighten screws.
5. Connect conduit hubs to conduit before connecting the hubs to the enclosure. After inserting hubs into enclosure, carefully tighten hub lock nut. Do not over-torque.
6. Wire in accordance with National and Local Codes.



**GROUNDING:** This enclosure is of plastic construction and does not require a ground connection and does not require bonding in pool applications.

*This enclosure does not provide grounding between conduits. When using non-metallic conduit or cable, connect the ground wires of all cables together with a wire nut. When metallic conduit is used, use grounding type bushings and a jumper wire between each conduit.*

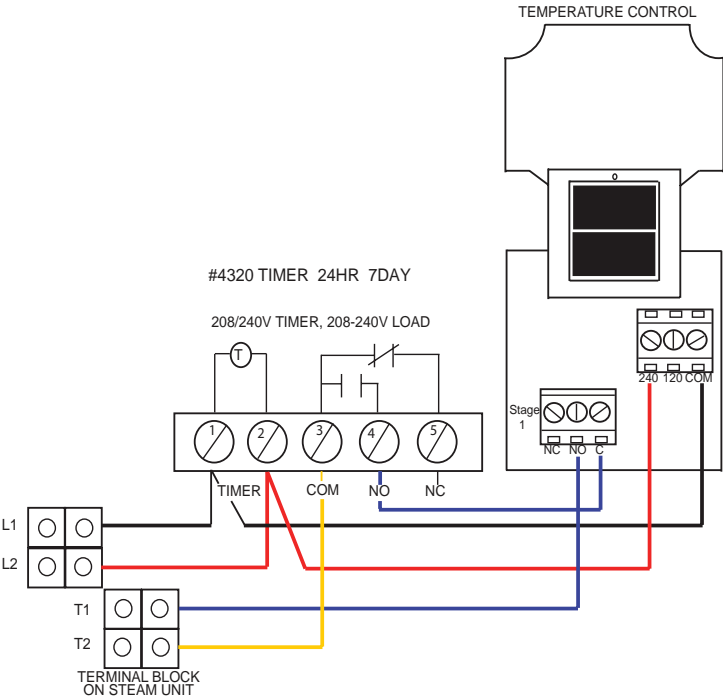
**PROGRAMMING INSTRUCTIONS**

**SETTING THE TIME:** TO SET THE CURRENT TIME (AND DAY OF WEEK ON 7 DAY UNITS), TURN THE MINUTE HAND CLOCKWISE. DO NOT SET THE TIME BY ROTATING "OUTER" DIAL.

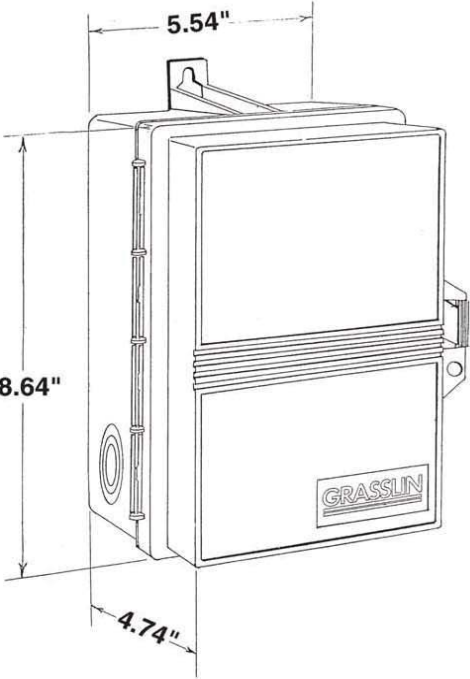
**PROGRAMMING:** The 24 Hour 7 Day model has trippers of 2 hour increments and the outer dial shows the 7 days of the week and AM/PM for each day. Push the captive trippers outward for the time period(s) that the load is to be on (Normally open contacts closed).

**MANUAL OVERRIDE:** With the manual switch in the middle position, the time switch is in automatic mode and will switch at the programmed times. In the upper position "I", the load is permanently ON. In the lower position, "O", the load is permanently OFF.

# WIRING TO TC-2 ELECTRONIC TEMPERATURE CONTROL



## Enclosure Dimensions



**READ AND SAVE THESE INSTRUCTIONS**